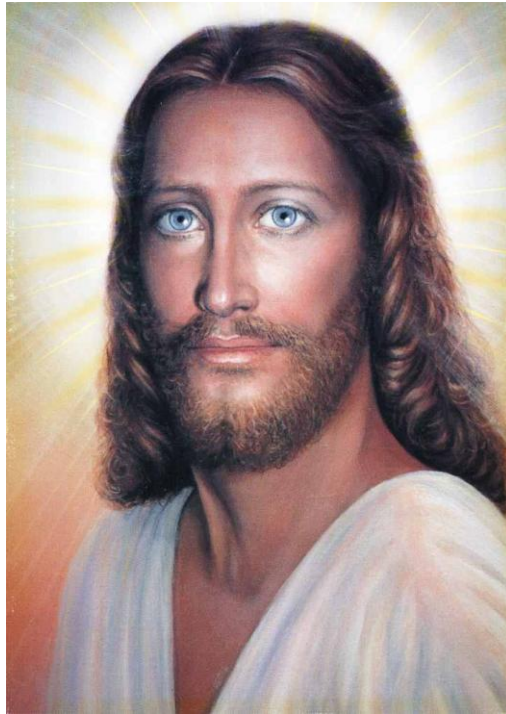


Messages for the June 1 2011 new moon

Today is Tuesday, May 31st, 2011 and tomorrow is the new moon for June, and it is a partial eclipse and so because it is a partial eclipse, I am looking to understand what energies, if any are coming forth with this event and what their significance is, and the first that wishes to come forth with a message in regard to this is Jeshua, and so let us see what he has to say;



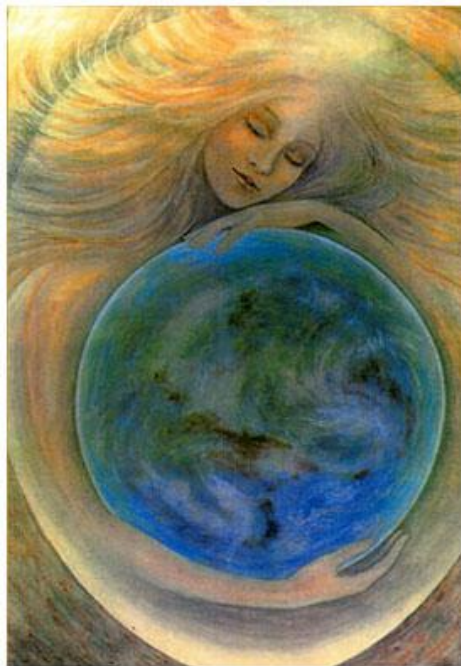
This event begins a series of important events, a series of important alignments which begin with this new moon and end with the following new moon in the beginning of July. These events include three eclipses, including the total eclipse for the full moon and also the June solstice. So you can see in a sense that the solstice has been surrounded by some additionally powerful events, because the eclipses, whether they be partial or total, are powerful gateways that are used and have been used over the millennia to bring energies to the planet.

This event you might look at as being the doorway to this unfolding that will proceed over the next 30 or so days, and it truly is a powerful moment. We have spoken many times about the changing energies on your planet as the various gateways have been used, and these energies have continued to be ramped; and as you will recognise, the June solstice represents a year and a half to run until the December 2012 solstice, when you could say the real action starts. So this is a very powerful ramping of the energies that will drive the transformation that will flow across the planet between now and that date, and these energies of transformation will be expressed in many ways. They will be expressed in part

with earth changes, they will be expressed in part with changes with financial systems, with government, with exposure of the manipulation and control that has been going on for humanity for many thousands of years, and it will see the emergence of that path that we've spoken about before, that new consciousness that will emerge with the coming forth of rejuvenation.

So the energies that are coming forth over these 30 days will target all of those things, move these things forward in powerful, powerful ways. And so that is the intention, the focus of these energies. There are some specific energies that will add to this broad perspective with the subsequent events, but this one really is just acting as the doorway as I mentioned to this unfolding, this powerful, powerful energetic unfolding that will proceed to come to the planet over the next 30 or so days. And so it is.

Carolyn - And so it is. Mother God has come into my awareness, and I see her very radiant. Well it's fair to say she usually is radiant, but today she seems even more radiant than usual.



I've been waiting a long time for these events. I've discussed some of this with my children on Earth, so you might say I have been preparing you for a very long time as to the importance, not just of this date, but the gateway that is behind the date. I don't think the influences on the physical body will wane. Rather, they will increase so that my children are healed and they rejuvenate. So you might say I have kept this close to my heart, knowing it was coming and actually seeing beyond those moments when it is here. I can see into the past and I can see into the future, and I understand the moment. Your moment is moving very quickly into the future, into the changes, into the full realization of who you are.

We can talk about energies, we can talk about gateways and dates and so many other things, but the really important thing is that you understand who you are, that you understand the power of your ability to create, of your power to be able to regenerate, rejuvenate your body, of your power to be able to forgive all of your past life karma, to have that cleared. You accept that as such a simple thing, yet there were so many steps that had to be taken before that particular piece actually fell into place. There was the karmic board to work with, there was the leader of the karmic board to refashion what had already been in place, and so Quan Yin was very helpful in this as the leader of the karmic board. But everyone pleaded with the powers that be, so that the human race could come to this moment that we are facing, come forward to this moment when all we hoped will be materialized. And so it is.

Today is Wednesday, 1 June 2011 which is the day of the new moon for June and also a partial eclipse; and an email came in today alerting me to a crop circle pattern which was laid down in June 2009 <http://www.cropcircleconnector.com/anasazi/time2011b.html> , which was laid down on three separate occasions as that pattern was expanded, and a gentleman from the CSIRO in Australia (has since retired) did some fascinating work to show that this pattern indeed referred to this date, this new moon date with this incredible planetary alignment which is occurring at the same time as this new moon. Carolyn and I have been looking at this and seeking to understand a little about what it means, and Jason our crop circle maker friend, who gave us quite a few messages last year in relation to the crop circles laid down during the early part of 2010, has come forth and wishes to talk to us about this pattern; and so let us see what he has to say.

The third part of Milk Hill on June 30, 2009 showed a series of strange astronomical hieroglyphs that were clearly alien-made



This pattern was intended to indeed point to this time, to this very special date. Firstly, it is as this gentleman has recognised, unmistakably referring to this date and time, and this was done for a very clear reason, and the reason was that this moment was an extremely important moment in the preparation for what is unfolding upon your planet. I came on your radio show a year or so ago and spoke about the events that were unfolding upon your planet, and specifically in relation to the Ascension process, which begins with that December 2012 solstice, and I am aware that you have placed that information on your website so that people can go and refer to that information (see http://www.the2012countdown.com/BBSRadio_show_recordings.html and http://www.the2012countdown.com/Key_YouTube_videos.html). But the reason we produced this pattern was to alert humanity to the importance of this moment. It is the moment when the true preparation for what will be unfolding truly begins. There has been a lot of preparation leading up to this moment (see http://www.the2012countdown.com/The_2012_Time_Line.html), but it is this moment which truly sets off the tremendous activity, the tremendous level of change which will occur upon your planet between now and the end of 2012. It is the moment when you will see the interference that Carolyn has been suffering from at the hands of the dark come to an end. It is the moment which triggers the coming forth of the rejuvenation process, which will see humanity return to a perfected physical form which does not age, in the same manner or the same form which existed prior to The Fall in Atlantis some 13,000 years ago; and so this marker is a very important one and this is the key reason that we brought focus to it, is to bring this understanding forth. It is no accident that there is this powerful planetary alignment in the dawn sky, this alignment of some six planets and also a comet quite rightly identified by this gentleman from Australia, which we marked as showing up in that pattern some two years ago and indeed it has only been early this year when humanity is actually become aware of the comet, and it was intentional that this be done because there has been so much spoken about to discredit what the crop circles bring forth, and this piece of evidence is undeniable. It is a forecast of what is unfolding, made at a time when no-one upon your planet was aware of this information, and here it is in that crop circle of two years ago, now unfolding in your skies, at the very moment that you are taking this message from me. It is a sign to humanity of the truth of what these patterns bring forth.

I do not wish to analyse these energies in great detail that come forth from the planets. The astrologers can do a better job of this than I can. That comet has come into that pattern for a specific reason, and the reason is that comets historically were seen as prophets in a sense, were seen as markers for major events to unfold. Sometimes they were seen as markers of good fortune, others of potential great disasters, and this one has been placed here as a pointer to the importance of this very special moment as events begin to unfold. It has also been placed here to connect with the comet which we placed in that circle relating to the December 2012 solstice, where again you see a comet, indeed

on that occasion coming inside the path of the moon at the time of the crescent moon in mid-December of 2012, and in that case it is a pointer to the coming forth of another aspect of that great being called Marietta (see http://www.iamjeshuareturned.com/the_means_of_the_trigger.html). Some of you would refer to this as being the return of that one you know of as Jeshua or Jesus, so long foretold. And so this comet that has been put in this pattern is both a marker for this important event, but also as a reminder to the power of comets as markers to humanity, and the fact that the one we placed in that pattern of December 2012 was a very important marker indeed. So these are the key things I wanted to share with you about this particular pattern.

Carolyn - Thank you very much for what you have given us. It seems to me from an astrological standpoint that different attributes have been given to different planets. For instance, Venus is considered the planet with the attribute of love, and I am wondering if there is some importance as to the different planets that are lined up, if they bring forth a certain energy, and if all of the energies together have an attribute or is this just a case of planets lining up to mark a particular moment.

As you rightly observe, each of the planets have an energy associated with them, and the reason that there are so many planets in this alignment is a reflection of the fact that there are many forms of change beginning to come forth. Yes, there will be great love being expressed, but also tremendous change on many levels, great disruption of how life has been lived, and those changes will occur very rapidly, which is the message from Mercury. So all of these coming together is in a sense a pointer to the chaotic state that events will move into upon your planet over the next few months, and that is the key thing to come forth from this collection of planets.

Carolyn - Thank you. Now it seems like in the crop, there is perhaps a language or wording that flows forth from the initial markers for the planetary systems, and we're not quite sure what all those little figures mean. Some people seem to feel that it is a language and perhaps a language from the stars, and I notice that this, for lack of a better word, language comes from the four groups of circles that appear to me to be coming to Earth. Do you wish to comment on that?

There is a powerful encoding in these symbols. This indeed is a universal language. You might call it the language of the stars. It is a symbolic language and it is conveying the power of each of these alignments as they work together. There will be messages which come forth which will explain in more detail what is unfolding, but the key reason that this was used was, firstly as a sign to humanity that this was not manmade, and secondly to record in this way the foreknowledge if you will, of what was about to unfold on your planet, because this will become very important as events unfold.

So many will believe there is no plan, that it is entirely chaotic, that things have gone completely out of control, when in truth that is not the case. All has been quite carefully planned, and so what will seem chaotic and completely destructive to some, will be a symphony of great beauty to others, because they have chosen to step forth in a manner which takes them in the direction that their Creator wishes them to go. And so this encoding I am not about to take the time to decode for you, other than to say that it foretells the story of what is about to unfold. And there will come a moment when it is appropriate to share the detail of what this is communicating. And so it is.

Carolyn - Thank you. I look at this as nature and spirit, or shall we say science and things spiritual as being companions with one another. I guess you might say nature is spiritual, but is there anything other than that in this alignment that points to the fact that there is a spiritual element here, a Master Creator so to speak, whose fingerprints are somehow in this picture?

It is more implied than it is spoken, because it is conveying that there is a plan behind what is about to unfold, and that carries implicitly the hand of a creative being of some sort, or beings, and it also conveys to humanity that there are those who are very aware of what is about to unfold upon your planet, much more than humanity themselves. So there are many messages coming forth from this.

Carolyn - Thank you.

Blessings, Joy, Love and Peace.

Richard Presser

For our karmic clearing and soul healing, go to

http://metatronminutes.com/archangel_metatron_readings.html

Check out our Right Brain Magic Sessions at www.RightBrainMagic.com

And Carolyn's extraordinary Key Past Life Sessions at

http://www.the2012countdown.com/Connect_to_a_past_life.html

For all of our products and services, go to <http://www.theshop2012.com>

Why would Steve Fossett have a view on 2012? See www.SteveFossettLives.com

For Jeshua's perspective, see www.IamJeshuaReturned.com

And "The Coming Golden Age and How to Prepare for it" – www.thecominggoldenage.com

To join our list to receive these emails, go to any page at www.the2012countdown.com
and enter your details.

Copyright © 2011 Cosmic Connections (International) Ltd

